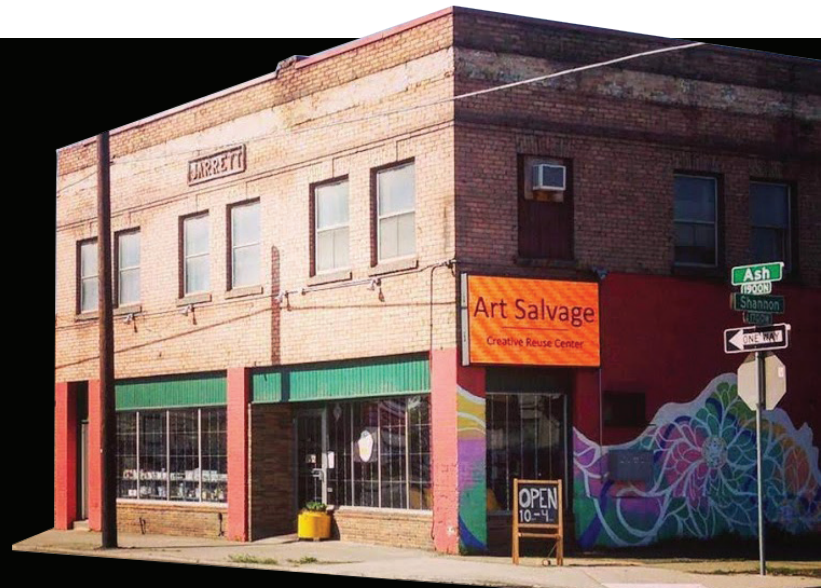


Art Salvage

Spokane



2018 Annual Report

A Message from Our Founders

Art Salvage's core mission of keeping usable materials out of the waste stream became a reality in 2018 when we opened the first creative reuse store in Spokane. In January we finalized our charter membership drive by surpassing our goal and raised \$5,800. This support in conjunction with the SAGA (Spokane Arts Grants Award) grant received the previous fall gave us the financial security to sign a lease in March. Right away we had volunteers helping us at each step to move thousands of pounds of donated materials into the store. Volunteers cleaned, set up shelving, and organized materials in preparation for the grand opening. By Earth Day weekend in April we opened the store doors to our charter members and then to the public with an outpouring of support from the community.

In the months following we saw a regular stream of artists, makers, families, and teachers come into the store. With steady sales throughout the year we covered all expenses and purchased a much needed air conditioner in the heat of summer. In this first year we ambitiously and successfully operated the store four days a week with an unpaid staff. As a volunteer powered organization, you probably got to know Amy and Katie as well as several regular volunteers that give their time each week in the store.

Volunteer involvement more than doubled this year with over 3,400 volunteer hours. While

it can certainly be a challenge to take donated materials and get them ready and priced, our volunteers organized every pencil, tube of paint, and yard of material.

With a home base of operations, we accepted over 10,000 lbs (5 tons) of usable arts and craft materials in 2018. Nearly 3,000 store sales in the first nine months show that affordable materials are getting into the hands of artists and makers.

Throughout the year we welcomed teachers to network during two Educator Open Houses and hosted field trips with local students from neighboring scout troops and schools. Shoppers came from the local neighborhood and the greater Spokane and Coeur d'alene area. We even welcomed visitors from other states and countries. One frequent comment we hear when people walk into the store is how well organized it is and how much fun customers have searching for treasures.

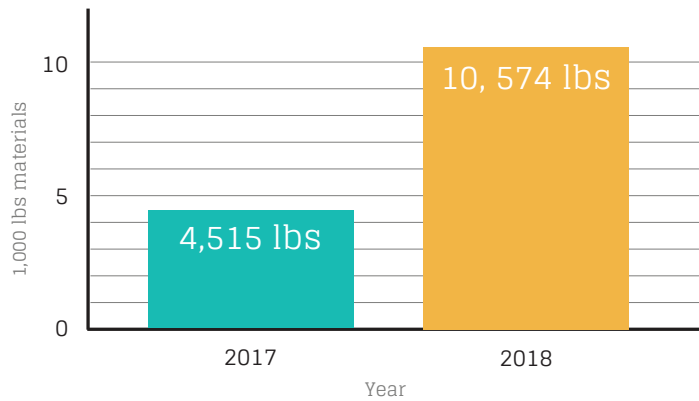
Our success is due to the generosity of Spokane, supporting creative reuse and embracing innovative ways to reduce our impact on the environment. In late 2018 we added six new board members with a wide range of skills and talents. This coming year we plan to increase our program offerings, expand community outreach, add paid staff, and increase store hours.

~ Katie Patterson Larson & Amy Mikelson

Materials Diverted from the Waste Stream

Our mission starts here. By collecting and filtering usable items, we are not only diverting them from the waste stream, but providing them to creators and artists for reimagination and repurpose.

Donated Materials



Volunteers

Our ability to divert this much waste would not be possible without the help of our dedicated and hardworking volunteers. Regardless of their commitment, whether weekly or monthly, our volunteers spend a considerable amount of time performing donation intakes, storing and sorting, as well as displaying and selling materials that would otherwise end up in waste stream.

73 volunteers
(43% increase from 2017)

3,847 volunteer hours
(\$57,705 value)





Community Engagement

In 2018 our young organization was focused on establishing a functional and vibrant storefront, as well as developing community connections and deepening our operational excellence. Collaborations include:

- Northwest Museum of Arts and Culture (MAC)
- Blueprints for Learning
- Girl Scouts
- Artist Trust
- Local teachers
- Spokane Public Montessori
- Spokane Arts
- River Ridge Association of Fine Arts

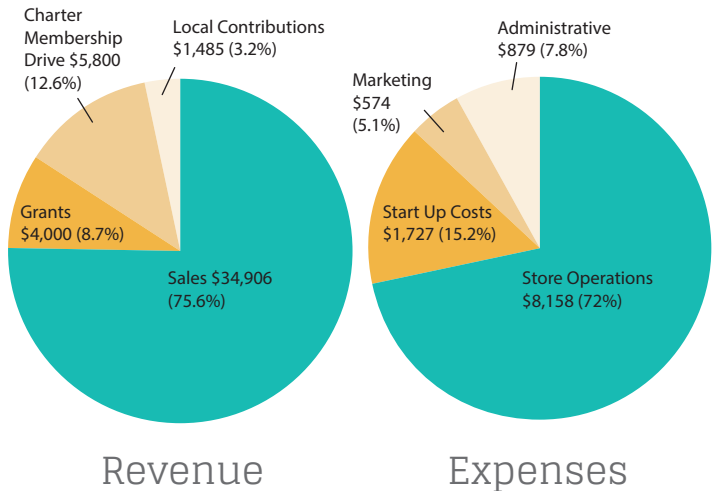
Online Engagement

1,560 Facebook
(50% increase from 2017)

1,078 Instagram

697 Email Subscribers
(increase +340)

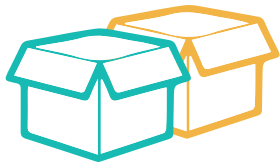
2018 Financials



MISSION

Art Salvage is a nonprofit organization that collects, organizes and redistributes usable art materials to keep them out of the waste stream. We seek to promote reuse and creativity for students, teachers, artists, crafters and makers of all ages.

100% volunteer powered organization



Process/sort
donations



Lead/assist
at a
workshop



Donate
materials



Help at
community
events



Donate
money

Member Support

A number of individuals stepped forward to become charter members giving us the foundational funding to get our organization off the ground. We wish to thank these instrumental community members for believing in Art Salvage's mission. We couldn't have done it without you.

Supporters \$250

Meg
Curtin Rey-Bear
Amy Mickelson

Christie Swisher
Sharon
Weiler-Race

Monica Stenezl
Nancy Streich
Linda Takami
Linnea Tobias
Molly Van Ryn
Gay Waldman
Kathy Walker
Don Walls
Kay West

Annie Fisch
Brooke Foley
Michele Follger
Ivory Freeman
Beth Ganick
Karen Gendron
Karlyn Hetzler
Kris Howell
Meghan Jones
Laura Jordan
Kelly Kleiderer
Karl Knutson
Shannon Lawson
Mary McDougall
Erica Morris
Michelle Neils
Chandra Neils
Geri Nurre
Dena Ogden
Stacie Probst
Kate Reed
Adrian Rogers
Catharine Roth
Jerri Shepard
Toni Spencer
Myrna Spracklen
Kathleen Storo
Brooke Wagner
Anne Weiland

Sustainer \$100

Jamie Burton
Thom Caraway
Alan Chatham
Lesli Cleveland
Melissa Click
Brenda Doggett
Nannette Dye
Larry Ellingson
Elizabeth Killian
Carolyn Kinghorn
Beth LaBar
Nicole Luth
Dan McCann
Caroline McRoberts
Peggy Patterson
Ron Patterson
Katie Patterson Larson
Lindsey Paxton
Teresa Schock
Deb and Jason
Sheldon
William Simmons
Kathryn Smith

Salvager \$50

Sondra Barrington
Heather Burford
Lynda Carpenter
Krista Elliott
Craig Fischer
Ann Glynn
Karyna Hamilton
Sheryl Hammons
Susan Holen
Mary Gayle Johnson
Kitty Klitzke
Carolyn Laduke
Sally Lancaster
Sunni Mace
Jennifer McCain
Kent Patterson
Ryan Patterson
Felisha Pederson
Megan Perkins
Jillian Peters
Sandra Phoenix
Darla Pilant
Sherane Prish
Alycia Staggs
Jody Steensland

Charter Member \$25

Joan Ashworth
Anne Barker
Virginia Baxter
Clare Bear
Stephanie Behne
Monica Bertucci
Kate Bitz
Barbara Casort
Renee Cebula
Sheri Chin
Bari Cordia Federspiel
Andrea Couch
Ruly Deen
Sharon Doyle
Mary Eberle
Jacqueline Essig
Deborah Essig
Patty Fay